

Service Request: [REDACTED]

Civic House, 110 Trafalgar Street  
PO Box 645, Nelson 7040, New Zealand

19 October 2021

P (03) 546 0200  
E LGOIMA@ncc.govt.nz  
[nelson.govt.nz](https://nelson.govt.nz)

Dear [REDACTED]

**OFFICIAL INFORMATION REQUEST FOR LOCATION INFORMATION FROM NOISE COMPLAINTS**

I refer to your official information request dated 24 September for location of noise complaints within the Nelson City area during the past two years.

The information is enclosed.

We have provided the information as a map, and we have aggregated the noise complaints to hexagons to ensure individual's privacy. Each hexagon represents a size of 0.025km<sup>2</sup>.

You have the right to seek an investigation and review by the Ombudsman of this response. Information about how to make a complaint is available at [www.ombudsman.parliament.nz](https://www.ombudsman.parliament.nz) or Freephone 0800 802 602.

If you wish to discuss this decision with us, please feel free to contact lgoima@ncc.govt.nz

Yours sincerely

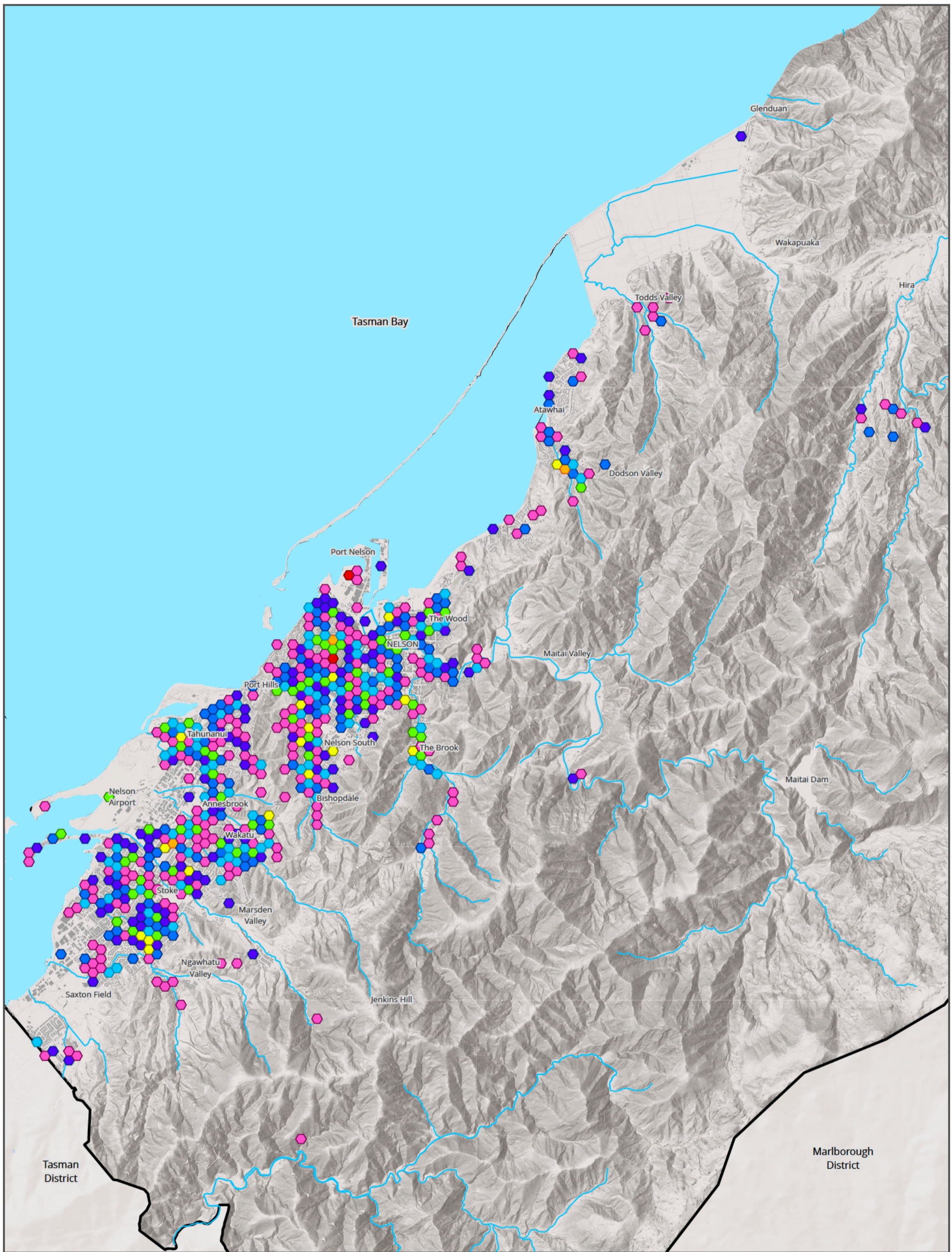


**Jane McLeod**

Manager Technology and Customer Experience

Encl: Aggregated Amount of Noise Complaints  
September 1<sup>st</sup> 2019 - 31<sup>st</sup> August 2021

[REDACTED]

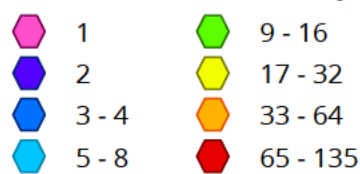


## Noise Complaints

Aggregated Amount of Noise Complaints  
September 1<sup>st</sup> 2019 - 31<sup>st</sup> August 2021



### Number of Noise Complaints



Scale: 1:65,000

N



October 2021

The map is an approximate representation only and must not be used to determine the location or size of items shown, or to identify legal boundaries. To the extent permitted by law, the Nelson City Council, their employees, agents and contractors will not be liable for any costs, damages or loss suffered as a result of the data or plan, and no warranty of any kind is given as to the accuracy or completeness of the information represented. Nelson City Council information is licensed under a Creative Commons Attribution 4.0 International License, and the use of any data or plan or any information downloaded must be in accordance with the terms of that licence. For more information please contact us. Cadastral information derived from Land Information New Zealand. CROWN COPYRIGHT RESERVED.

File Ref: A2768357  
MP. Original map size A3.